

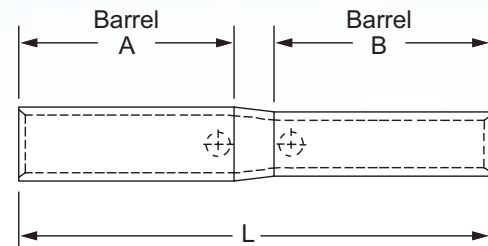
COPPER COMPRESSION SPLICES

Copper Reducing Crimp Splice with Inspection Windows

NEW PRODUCT

Type BCUR

- Manufactured from high conductivity seamless copper tubing
- Designed for splicing two different cable sizes end to end
- Connectors are cULus listed for use with Class B & C copper building conductor and diesel locomotive cable and temperature rated to 90°C
- Connectors are cULus listed per UL486A-B for power applications and are also listed per UL467 for grounding, bonding and direct burial applications
- Tin plated to inhibit corrosion
- Beveled entry for easy cable insertion
- Color coded barrels are marked with appropriate conductor size and die index numbers
- Connectors are cULus listed with Penn-Union, Burndy, T&B, Huskie, Greenlee and Versa-Crimp style tooling
- Inspection windows in each barrel ensures full cable insertion
- Connectors are suitable for voltages up to 35KV if taped according to accepted practices, 5KV is the maximum voltage level in all bare splice applications



BCUR DIMENSIONS & INDEX REFERENCE

CATALOG NUMBER	COPPER CONDUCTOR SIZE				CONNECTOR INFORMATION									WIRE STRIP LENGTH	
	BARREL A		BARREL B		DIMENSIONS (IN.)			COLOR CODE		BURNDY DIE INDEX NO.		PENN-UNION DIE CATALOG NO.		BARREL A	BARREL B
	CLASS B & C COPPER CONDUCTOR	DIESEL LOCOMOTIVE CABLE	CLASS B & C COPPER CONDUCTOR	DIESEL LOCOMOTIVE CABLE	BARREL A	BARREL B	OVERALL LENGTH "L"	BARREL A	BARREL B	BARREL A	BARREL B	BARREL A	BARREL B	BARREL A	BARREL B
BCUR-4-6	4 AWG	105/24	6 AWG	61/24	.94	.94	1.95	GRAY	BLUE	B-8	B-7	T-8	T-7	1-1/16"	1-1/16"
BCUR-2-6	2 AWG	125/24	6 AWG	61/24	.97	.94	2.11	BROWN	BLUE	B-10	B-7	T-10	T-7	1-1/8"	1-1/16"
BCUR-2-4	2 AWG	125/24	4 AWG	105/24	.97	.94	2.06	BROWN	GRAY	B-10	B-8	T-10	T-8	1-1/8"	1-1/16"
BCUR-1/0-6	1/0 AWG	225/24	6 AWG	61/24	.97	.94	2.26	PINK	BLUE	B-12	B-7	T-12	T-7	1-1/8"	1-1/16"
BCUR-1/0-4	1/0 AWG	225/24	4 AWG	105/24	.97	.94	2.21	PINK	GRAY	B-12	B-8	T-12	T-8	1-1/8"	1-1/16"
BCUR-2/0-6	2/0 AWG	275/24	6 AWG	61/24	1.03	.94	2.42	BLACK	BLUE	B-13	B-7	T-13	T-7	1-3/16"	1-1/16"
BCUR-2/0-4	2/0 AWG	275/24	4 AWG	105/24	1.03	.94	2.36	BLACK	GRAY	B-13	B-8	T-13	T-8	1-3/16"	1-1/16"
BCUR-4/0-6	4/0 AWG	450/24	6 AWG	61/24	1.09	.94	2.69	PURPLE	BLUE	B-15	B-7	T-15	T-7	1-1/4"	1-1/16"
BCUR-4/0-4	4/0 AWG	450/24	4 AWG	105/24	1.09	.94	2.71	PURPLE	GRAY	B-15	B-8	T-15	T-8	1-1/4"	1-1/16"
BCUR-4/0-1/0	4/0 AWG	450/24	1/0 AWG	225/24	1.09	.97	2.40	PURPLE	PINK	B-15	B-12	T-15	T-12	1-1/4"	1-1/8"
BCUR-4/0-2/0	4/0 AWG	450/24	2/0 AWG	275/24	1.09	1.03	2.35	PURPLE	BLACK	B-15	B-13	T-15	T-13	1-1/4"	1-3/16"
BCUR-050-030	500 kcmil	925/24	300 kcmil	550/24	1.54	1.23	3.33	BROWN	WHITE	B-20	B-17	T-20	T-17	1-11/16"	1-3/8"
BCUR-075-4/0	750 kcmil	1600/24	4/0 AWG	450/24	1.85	1.09	3.97	BLACK	PURPLE	B-24	B-15	T-24	T-15	2"	1-1/4"
BCUR-075-035	750 kcmil	1600/24	350 kcmil	650/24	1.85	1.36	3.97	BLACK	RED	B-24	B-18	T-24	T-18	2"	1-1/2"
BCUR-075-050	750 kcmil	1600/24	500 kcmil	925/24	1.85	1.54	3.80	BLACK	BROWN	B-24	B-20	T-24	T-20	2"	1-11/16"
BCUR-100-4/0	1000 kcmil	1924/24	4/0 AWG	450/24	2.13	1.09	4.71	WHITE	PURPLE	B-27	B-15	T-27P	T-15	2-1/4"	1-1/4"
BCUR-100-050	1000 kcmil	1925/24	500 kcmil	925/24	2.13	1.54	4.44	WHITE	BROWN	B-27	B-20	T-27P	T-20	2-1/4"	1-11/16"
BCUR-100-075	1000 kcmil	1924/24	750 kcmil	1600/24	2.13	1.85	4.55	WHITE	BLACK	B-27	B-24	T-27P	T-24	2-1/4"	2"